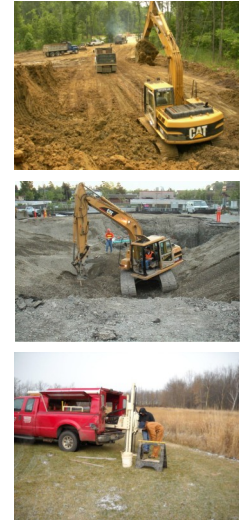


Site Investigation & Remediation Services

Bay Environmental Strategies, Inc. (BAY) will work with you to develop cost-effective investigative and remedial services for your impacted property. BAY's staff has participated in numerous and diverse investigations and cleanups. BAY's experience includes hazardous waste investigation and cleanup, underground/aboveground storage tank (UST/AST) investigation and cleanup, spill response, state-funded cleanups (**PECFA**), and **Brownfields**. BAY project manager will work with you to coordinate activities with the regulatory entity of your site and ensure that all phases of the project are performed following acceptable state and federal guidelines and regulations. The typical investigation and remediation phases include: Phase I and II environmental site assessments (ESAs), underground and above ground storage tank (UST/AST) removals and assessments, interim actions, site investigations, and remedial actions.



Phase I and II ESAs/UST Assessments

- ESA Transaction Screen Process and Phase I ESA in accordance with ASTM Standards & 2002 Brownfield ACT.
- Phase II ESAs
- UST/AST Removals and Assessment

Site Investigations

- Historical Property Evaluation
- Work Plan Development
- Field Coordination
- Soil Identification
- Hydrogeologic Evaluation
- Soil and Groundwater Sampling
- Voluntary Party Liability Exemption (VPLE)

Remedial Actions

- Remedial Action Plan Development
- Monitoring and Evaluating Natural Attenuation
- Ex-situ Remediation, Biopiles, Land spreading
- In-situ Groundwater and Soil Vapor Extraction
- Air Sparging
- Solid and Hazardous Waste Management
- Institutional Controls